



## HAZENDAL WINE ESTATE STELLENBOSCH

Date	Aug 2018 - Jul 2019
Location	Stellenbosch
Principle	Hazendal Wine Estate
Client	Michael Hackner & Associates
Category	National Heritage Reconstruction
Areas	Function and Wine Tasting Rooms Avant Garde Resaurant & Garden Area, The Kraal

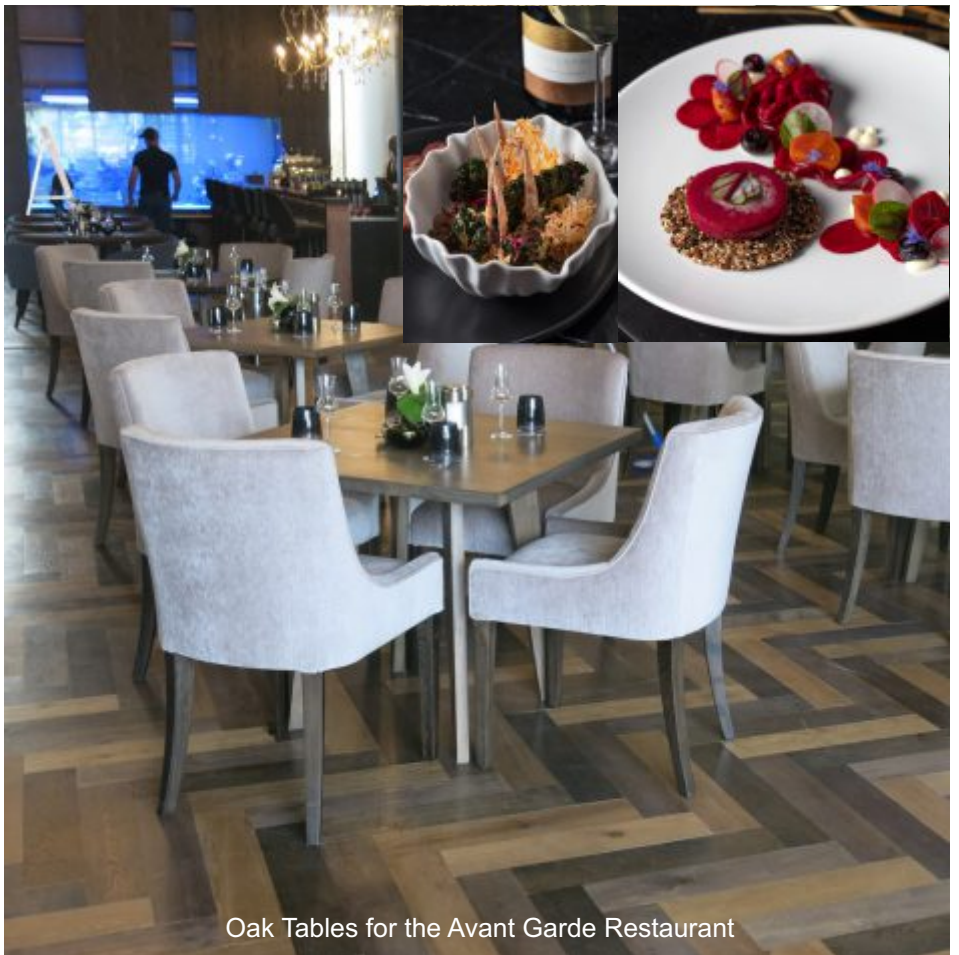
### THE BRIEF for PATIO LIFE

Manufacture deliver and instal original design specified furniture and fabrics for the Function and Conference Centre, the Avant Garde Restaurant and adjacent Garden area, Picnic Lawns, and the Kraal Area. The furniture included four unique styles of tables, rope woven chairs using macrame knots, benches and tables, as well as the construction of sixteen unique 4x4 m Gazebos.





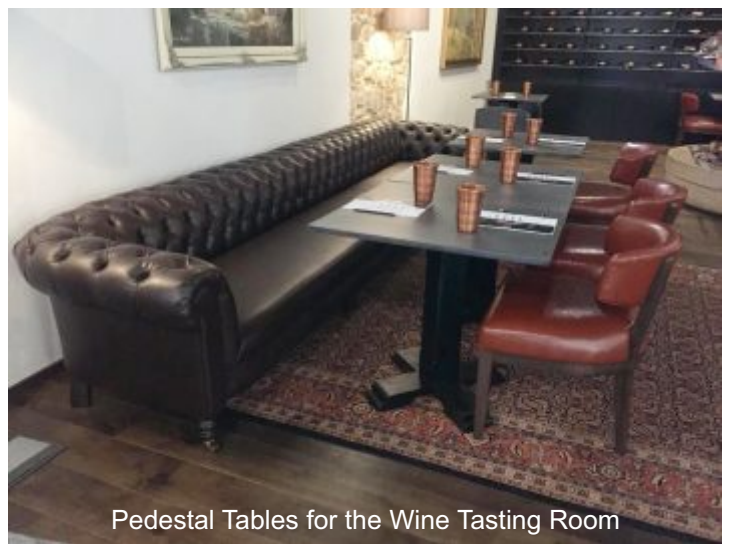
Bespoke Design Function Table



Oak Tables for the Avant Garde Restaurant



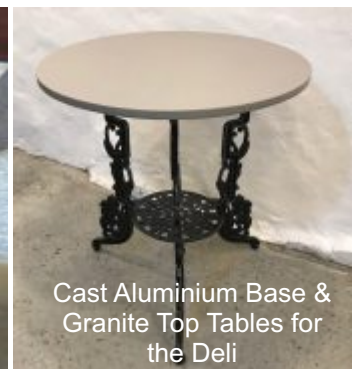
Oak Base & Granite Top Tables for the Deli



Pedestal Tables for the Wine Tasting Room



Pedestal Tables for the Wine Tasting Room



Cast Aluminium Base & Granite Top Tables for the Deli



**THE KRAAL: Purpose Built Gazebos using Kiaat posts and beams with Steel Support connectors, finished with waterproof canopies attached to an aluminium structure and Shear weave curtains. Custom size benches and tables with steel frames and slatted hardwood tops.**



AVANT GARDE RESTAURANT OUTDOOR AREA: Aluminium frame chairs woven with 3 mm braided polyester rope using an intricate Macrame Knot technique. Epoxy coated steel frame tables with hardwood slats



Custom manufactured all weather curtains for wind and sun protection



Fibre concrete Picnic Tables